

DH46-C3

Engine model : CUMMINS QSX 15
Engine net power : 380KW(510HP)
Operating weight : RS: 56000KG

BULLDOZER



GM
TRACTORS

SHANTUI®
VALUE THAT WORKS

Head Office

Jl. Lingkar Luar Barat No.3 Rawa Buaya-Cengkareng
Jakarta Barat – Indonesia 11740

Telp : (62 21) 581 68 99 (Hunting)

Fax : (62 21) 583 01 788, 583 57 099

Email : info@gmtractors.com

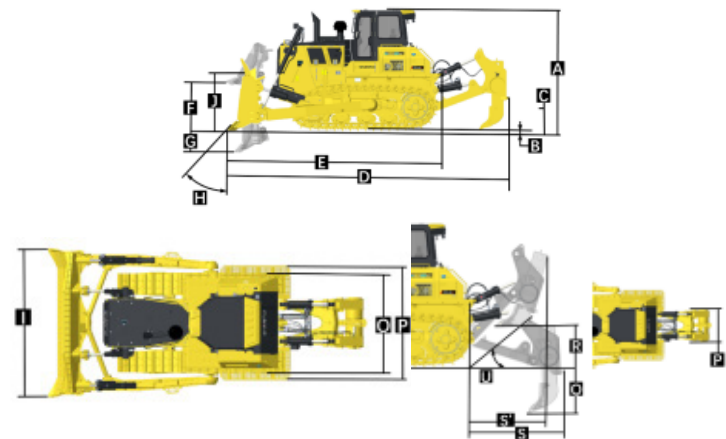
Website: www.gmtractors.net

Technical Specification

Engine		
Engine	Cummims QSX 15	
Emission	U.S. EPA Tier 3, EU Stage IIIA	
Rated revolution	1800rpm	
Gross power	380kW(510hp)	
Net power	149kW(200hp)@1950	
No. of cylinder-bore×stroke	6×137mm×169mm	
Displacement	15L	
Max. torque	2365Nm@1400rpm	
Cooling System	Smart temperature-controlled fan	
DRIVE SYSTEM		
Drive system	Independent dual-circuit electric control hydrostatic drive, intelligent matching of speed-load, "stepless" variable speed, mono-lever control of travel, speed and steering; steering with load, pivot steering, work flexibly, high efficiency, easy for maintenance	
System overflow pressure	43500kPa	
Traveling speed	Forward	0~11km/h
	Backward	0~11km/h
Max. theoretical traction force	720kN	
Steering	Independent drive of track at both sides to ensure the full power output for pivot steering and steering with load	
Brake	Regular closed multi-disk brake	
FINAL DRIVE	Double-reduction final drives of spur gear and planetary gear	
CHASSIS SYSTEM		
Type	Pivot, equalizing beam suspended type, semi-rigid structure	
Track shoe type	Single grouser	
Track gauge	2260mm	
Width of track shoe	610mm/660mm/710mm	
Track grounding length	3532mm	
Track grounding area	21545cm ²	
Number of track shoe	40 pcs/side	
Grounding pressure (standard configuration)	120kPa	
Number of carrier roller	2 pcs/side	
Number of track roller	7 pcs/side	
Pitch	260MM	
VOLUME		
Fuel capacity	920L	
Coolant liquid capacity	73L	
Engine oil capacity	45-49L	
Hydraulic oil tank (travel)	370L	
Hydraulic oil tank (work)	43L/single side	

Final drive	8L
Transfer case	6L
OPERATING WEIGHT	RS
Operating weight	56000kg
BLADE	RS
Blade type	Rock Blade
Blade capacity	13.7m ³

Dimension	RS
(A) Machine height	3990mmO
(B) Track grouser height	87mm
(C) Ground clearance	680mm
(D) Machine length (with ripper)	9325mm
(E) Machine length (without ripper)	7085mm
(F) Max. lifting height of blade	1460mm
(G) Max. digging depth of blade	660mm
(H) Digging angle of blade	53°±3°(deg.)
(I) Blade width	4320mm
(J) Blade height	1950mm
Blade tilt height	1140mm
(O) Width from end of left track shoe to end of right track shoe (standard)	2870mm
(P) Width from end of left footplate to end of right footplate (standard)	3322mm



RIPPER	
TYPE	Single Shank ripper
Weight	3728kg
Q Ripping Depth of Ripper	1245mm
R Lifting Height of Ripper	1056mm
S Length of Ripper(Maximum Sub-soiling Position)	2475mm
T Width of Ripper	1490mm
U Tilt Angle(Maximum Lift Position)	37.5°

THE SPECIFICATIONS ARE SUBJECT TO CHANGE WITHOUT NOTICE. THE PICTURES MAY INCLUDE OPTIONS. THE ACTUAL COLOR & APPEARANCE OF THE PRODUCT MAY DIFFER FROM WHAT IS SHOWN.

Networking

Surabaya | Semarang | Denpasar | Medan | Pekanbaru | Palembang | Batam | Balikpapan | Banjarmasin | Makassar | Kendari | Manado