

QY55KA_Y

Truck Crane



- Leading lifting and driving performances
- Reliability of heat dissipation, electrical system etc. Has been improved with safer operation and driving
- Mature and reliable double-pump confluence technique, maintaining the advantages of efficient operation
- Air-aid shift gears and 45% of shifting force is reduced
- Appearance molding is newly upgraded, humanized design and comfortable riding manipulation



Head Office Gaya Makmur Putra

Jl. Lingkar Luar Barat Duri Kosambi No.1 -Cengkareng
Jakarta Barat - Indonesia 11740

Telp : (62 21) 544 8128 / 30

Fax : (62 21) 544 8131

Email : info@gmtractors.com

Website : www.gmtractors.net

QY55KA_Y boom rated lifting load tables (Outrigger fully-extended, 6.5t counterweight)

Working radius (m)		Fully-extended outriggers, over side and rear area operation; fully-extended outriggers, with 5 jack, 360° operation																										
		Primary boom 11.4m			Middle long boom 15.41m			Middle long boom 19.42m			Middle long boom 25.44m			Middle long boom 31.46m			Middle long boom 37.48m			Boom fully extended 43.5m								
		Lifting load (kg)	Boom angle (°)	Lifting height (m)	Lifting load (kg)	Boom angle (°)	Lifting height (m)	Lifting load (kg)	Boom angle (°)	Lifting height (m)	Lifting load (kg)	Boom angle (°)	Lifting height (m)	Lifting load (kg)	Boom angle (°)	Lifting height (m)	Lifting load (kg)	Boom angle (°)	Lifting height (m)	Lifting load (kg)	Boom angle (°)	Lifting height (m)	Lifting load (kg)	Boom angle (°)	Lifting height (m)			
3		55000	70	11.8	45000	76	16.1																					
3.5		51000	67	11.6	45000	74	15.9																					
4		48000	64	11.3	45000	72	15.7	35000	76	20	25000	80	26.3															
4.5		45000	61	11	43000	70	15.5	33000	74	19.8	25000	79	26.2															
5		41000	58	10.7	40000	68	15.3	32000	73	19.6	25000	77	26	18500	80	32.2												
5.5		36500	55	10.3	36000	66	15	29000	71	19.4	25000	76	25.9	18500	80	32.1												
6		33000	52	9.9	32500	63	14.8	27000	70	19.2	23300	75	25.7	18500	79	32												
7		27000	45	8.9	26600	59	14.2	24500	66	18.8	21000	73	25.4	18500	77	31.7	14000	79	37.9									
8		22200	36	7.5	22600	54	13.4	22500	63	18.2	19000	70	25	17700	75	31.4	13200	78	37.7	9500	80	44						
9		17500	26	5.6	17600	50	12.6	17600	60	17.6	17000	68	24.6	16300	73	31.1	12500	76	37.4	9500	79	43.6						
10					14600	44	11.5	14200	56	16.9	15400	65	24.1	15000	71	30.7	11800	75	37.1	9300	77	43.3						
12					10100	31	8.6	10000	48	15.2	10700	60	23	11300	67	29.8	10300	71	36.4	8600	75	42.7						
14								7200	39	12.9	7900	55	21.5	8400	63	28.8	8800	68	35.5	7900	72	42						
16								5300	28	9.5	6000	49	19.8	6500	59	27.5	6800	65	34.5	7100	69	41.2						
18											4600	42	17.7	5100	54	26	5400	61	33.4	5600	66	40.3						
20											3500	34	14.9	4000	49	24.3	4300	58	32.1	4500	63	39.2						
22											2700	24	10.9	3100	44	22.3	3600	54	30.5	3700	60	38						
24														2500	38	19.7	2800	50	28.8	3000	57	36.6						
26														1800	31	16.6	2200	45	26.8	2400	54	35						
28																	1700	41	24.4	1950	50	33.3						
30																	1300	35	21.6	1500	46	31.3						
32																				1200	42	29						
Telescoping rate of each boom section %		II	0			50%			100%						100%					100%						100%		
		III	0			0			0						25%					75%							100%	
		IV	0			0			0						25%					75%							100%	
		V	0			0			0						25%					75%							100%	
Parts of line			12			10			8			6			4				3							3		
Boom angle			26°~70°			31°~76°			28°~76°			24°~80°			31°~80°				35°~80°							42°~80°		
Hook block																												

515kg

QY55KA_Y jib rated lifting load tables (boom fully-extended 43.5m)																		
With 7.1m fully-extended outrigger, without 5th jack supported, side and rear area operation; with 5th jack supported, 360° operation																		
	1st jib section mode									2nd jib section mode								
Jib length	9.5m									16m								
Jib offset angle	0°			15°			30°			0°			15°			30°		
Boom angle	Lifting load	Radius	Lifting height	Lifting load	Radius	Lifting height	Lifting load	Radius	Lifting height	Lifting load	Radius	Lifting height	Lifting load	Radius	Lifting height	Lifting load	Radius	Lifting height
78	4500	12.8	52	3000	14.9	51.2	2500	16.6	49.8	2800	15	58.1	1500	18.6	56.6	1200	21.6	54.2
75	4000	15.5	51	2700	17.5	50.1	2400	19.2	48.7	2200	18	57	1300	21.5	55.3	1100	24.4	52.8
72	3500	18.1	49.9	2500	20	48.9	2300	21.6	47.4	1900	20.9	55.8	1200	24.3	53.9	1000	27.1	51.2
70	3200	19.8	49.1	2300	21.7	48	2200	23.2	46.5	1800	22.8	54.9	1200	26.1	52.9	950	28.8	50.1
65	2550	23.9	46.9	2100	25.7	45.6	1900	27.2	44	1600	27.4	52.4	1000	30.6	50.1	850	33	47.1
60	2000	27.9	44.3	1700	29.6	42.9	1600	30.8	41.1	1200	31.8	49.5	900	34.8	46.9	750	37	43.7
55	1200	31.6	41.4	1000	33.2	39.8	900	34.3	37.9	850	36	46.2	700	38.7	43.4	650	40.6	40
50	600	35.1	38.2	500	36.5	36.5	500	37.4	34.5	450	39.9	42.6	400	42.3	39.5	350	43.9	36

Main Specification

Dimension Parameter			Main performance parameter				
Overall length			13930 mm	Maximum rated total suspended load	55 t		
Overall width			2780 mm	Minimum working range	3 m		
Overall height			3660 mm	Turning radius of rotary table	3800 mm		
Wheel base	The first and second wheel base		1470 mm	Maximum load moment	Base boom	2009 kN.m	
	The second and third wheel base		4300 mm		Full-extend boom	1129 kN.m	
	The third and fourth wheel base		1350 mm	Outriggerspan	Length wise direction	6.1 m	
Wheel track	Front wheel	2304 mm			landscape orientation	7.1 m	
	Rear wheel	2075 mm		Lifting height	Base boom	11.9 m	
Weight Parameter					Full-extend boom	44 m	
Dead weight in travel states			42200 kg		Full-extend boom+ jib	58.1 m	
Wheel track	Front axle	16200 kg		Boom length	Base boom	11.4 m	
	Back axle	26000 kg			Full-extend boom	43.5 m	
Kinetic Parameter					Full-extend boom+ jib	59.5 m	
Undercarriages engine	Type	WD615.338		Offset angle of jib		0,15,30 °	
	Rated power	276/2200 kw/(r/min)		Working speed parameter			
	Maximum torque	1500/1300~1600 N.m/(r/min)		Time of boom derricking	Rise boom	40 s	
	Effluent standard	CHINA NATIONAL III			Failing boom	180 s	
Running Parameter				Boom telescopic time	Fully extended	90 s	
Maximum travel speed			85 km/h		Fully retracted	180 s	
Minimum diameter of turning circle			24 m	Maximum turning speed			2 r/min
Minimum ground clearance			327 mm	Contraction time of landing leg	Horizontal landing leg	Stretching at the same time	35 s
Approach angle			18 °			Shortening at the same time	30 s
Departure angle			15 °		Vertical landing leg	Stretching at the same time	40 s
Braking length (the speed is 30km/h)			≤10 m			Shortening at the same time	35 s
Maximum gradeability			42 %	Main liftings tructure	Full load	85 m/min	
Fuel consumption per hundred kilometers			≤40 L		Empty load	130 m/min	
Noise Parameter				Auxiliary lifting structure	Full load	85 m/min	
Car exterior noise when speeding up			≤88 dB(A)		Empty load	130 m/min	
Noise around the driver's ear			≤90 dB(A)	Noise			
Maximum rated total suspended load			55 t	Radiation outside the machine			≤122 dB (A)
Minimum working range			3 m	Driver seats			≤ 90 dB (A)
Turning radius of rotary table			3800 mm				
Maximum load moment	Base boom		2009 kN.m				
	Full-extend boom		1129 kN.m				
Outriggerspan	Length wise direction		6.1 m				
	landscape orientation		7.1 m				

ADVANTAGE OF SIX MAJOR PRODUCTS

LEADING LIFTING AND DRIVING PERFORMANCE

- » Five section U-type booms. The boom length is 11.4m-43.5m with strong lifting performance, leading 5%-10% ahead of products with the same tonnages in the same industry.
- » High - power engine with good dynamic performance, strong gradeability and superior trafficability. The maximum gradeability and maximum travel speed respectively are 42% and 85km/h.

RELIABILITY OF HEAT DISSIPATION, ELECTRICAL SYSTEM ETC. HAS BEEN IMPROVED WITH SAFER AND DRIVING

- » Waterproof connector clip. It is equipped with rubber sheath inside with excellent water impervious and level of protection to IP65.
- » Aluminium alloy fuel tank. Good appearance quality, corrosion resistance, strong shock resistance capacity.
- » Double-broken line winch. The hoisting rope is in alignment, and it will be more reliable if turn off the press-rope machine.
- » Optimized heat-removal system. The air-conditioning condenser is separately installed, the heat-sinking capability is sharply improved and the environment temperature reached to more than 45oC.

MATURE AND RELIABLE DOUBLE-PUMP CONFLUENCE TECHNIQUE, MAINTAINING THE ADVANTAGES OF EFFICIENT OPERATION

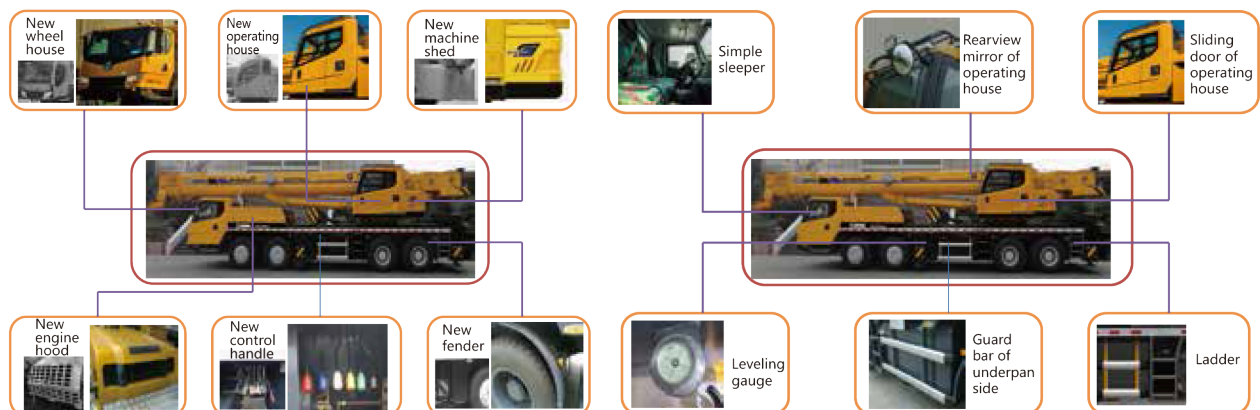
- » Special confluence multi-valve has been designed. The double-pump confluence technique is adopted in raising and falling of winch, extending and retracting of lazy boom and luffing, leading ahead of luffing and extending and retracting operations.

AIR-AID SHIFT GEARS AND 45% OF SHIFTING FORCE IS REDUCED

- » Special air-aid shift gears protection mechanism. The boost system will work only by stepping on the clutch that effectively avoids gearbox damaging gears when shifting. Compared with the same industry, 100mm distance of shift gears and 45% of shifting force are respectively reduced.

APPEARANCE MOLDING IS NEWLY UPGRADED, HUMANIZED DESIGN AND COMFORTABLE RIDING MANIPULATION

- » New operating house, wheel house, engine hood and machine shed, novel appearances, fine lines of the complete machine appearance, shows its elegant appearance.



THE SPECIFICATIONS ARE SUBJECT TO CHANGE WITHOUT NOTICE. THE PICTURES MAY INCLUDE OPTIONS. THE ACTUAL COLOR & APPEARANCE OF THE PRODUCT MAY DIFFER FROM WHAT IS SHOWN.

Networking

Semarang | Surabaya | Denpasar | Semarang | Medan | Pekanbaru | Palembang | Batam | Balikpapan | Banjarmasin | Makassar | Kendari | Manado