

XE370CA

Hydraulic Excavator



XE370CA crawler hydraulic excavator is a new self-developed product according to market demand. With reference to the similar products abroad and by adopting advanced design techniques, this excavator is featured with the latest technology, full attention to safety and environmental performance, and high production efficiency. This excavator is powerful and has a full range of applications, including excavating, loading, unloading and lifting. It can be widely used in municipal construction, highway and bridge, building construction, road construction, water conservancy construction, port construction and other earthwork construction and mining projects. Equipped with a hydraulic hammer, the machine can perform crushing operations. The working temperature is between -15 °C and 40 °C, and the altitude is below 2000 meters.

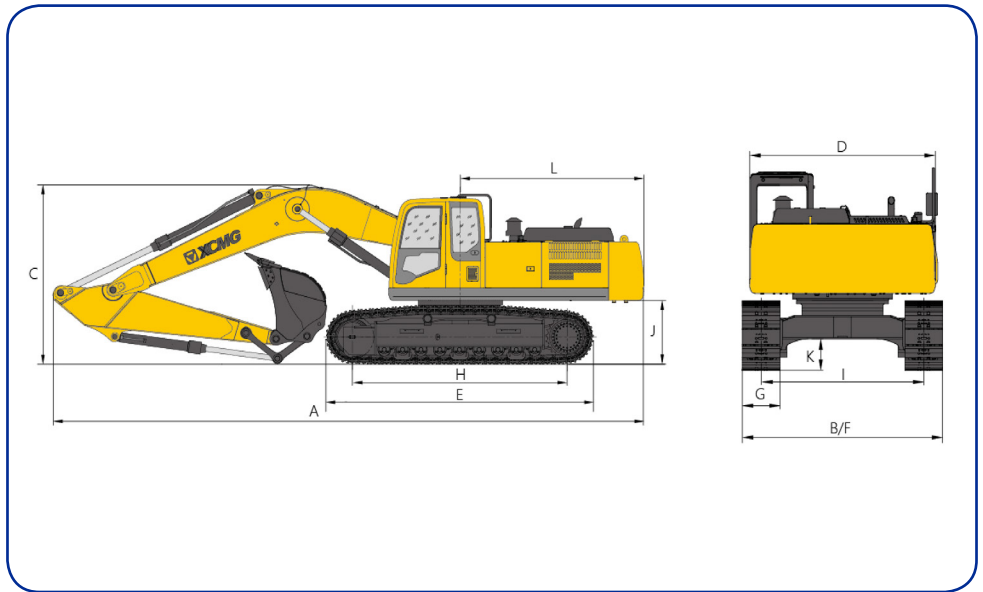
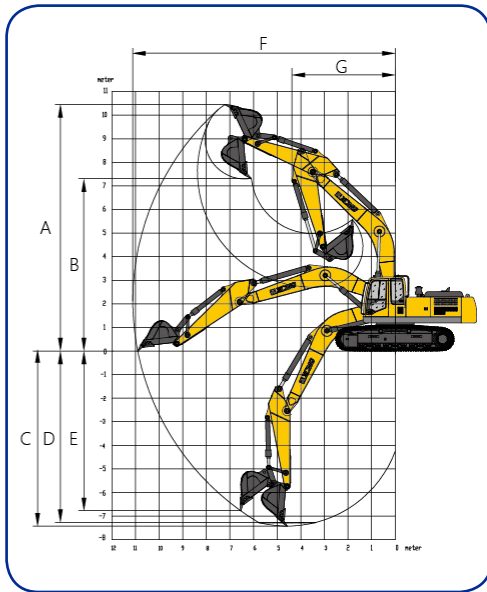


Engine Model : ISUZU AA-6HK1XQP
Bucket Capacity : 2.1m³
Operating Weight : 36600 kg
Rated power/speed : 190.5/2000 kW/rpm



Head Office Gaya Makmur Putra
Jl. Lingkar Luar Barat Duri Kosambi No.1 -Cengkareng
Jakarta Barat - Indonesia 11740
Telp : (62 21) 544 8128 / 30
Fax : (62 21) 544 8131
Email : info@gmtractors.com
Website : www.gmtractors.net

Overall Dimension



Main Specification

Item	Specification
Operating weight	36600 kg
Bucket capacity	2.1 m ³
Engine	
Model	ISUZU AA-6HK1XQP
Electric injection	√
Four Strokes	√
Water Cooling	√
Turbo-charging	√
Air to air intercooler	√
No. of cylinder	6
Rated power/speed	190.5/2000 kW/rpm
Maximum torque/speed	872.8/1700 N.m/rpm
Displacement	7.79 L
Main Performance	
Travel speed (H/L)	5.4/3.2 km/h
Swing speed	9.7 r/min
Gradeability	≤35°
Ground pressure	66.6 kPa
Bucket digging force	263 kN
Arm digging force	225 kN
Maximum tractive force	285 kN
Hydraulic system	
Main pump	2×Piston pump
Rated flow of main pump	2×320 L/min
Main safety valve pressure	34.3/37.3 MPa
Travel system pressure	34.3 MPa
Swing system pressure	26.5 MPa
Pilot system pressure	3.9 MPa

Oil Capacity	
Fuel tank capacity	630 L
Hydraulic tank capacity	320 L
Engine oil capacity	30 L
Appearance size	
A. Overall length	11386 mm
B. Overall width	3190 mm
C. Overall height	3530 mm
D. Width of platform	2950 mm
E. Track length	5035 mm
F. Total width of chassis	3190 mm
G. Track shoe width	600 mm
H. Wheel base of crawler	4040 mm
I. Track gauge	2590 mm
J. Counterweight clearance	1197 mm
K. Min. ground clearance	500 mm
L. Min. tail swing radius	3570 mm
M. Track height	1105 mm
Working Range	
A. Max. digging height	10123 mm
B. Max. dumping height	6947 mm
C. Max. digging depth	6927 mm
D. Maximum depth cut for 2240mm(8 ft) level bottom	6709 mm
E. Max. vertical wall digging depth	5312 mm
F. Max. digging radius	10470 mm
G. Min. swing radius	4424
Standard	
Length of boom	6400 mm
Length of arm	2670 mm
Bucket Capacity	1.6 m ³

THE SPECIFICATIONS ARE SUBJECT TO CHANGE WITHOUT NOTICE. THE PICTURES MAY INCLUDE OPTIONS. THE ACTUAL COLOR & APPEARANCE OF THE PRODUCT MAY DIFFER FROM WHAT IS SHOWN.

Networking

Semarang | Surabaya | Medan | Pekanbaru | Palembang | Batam | Balikpapan | Banjarmasin | Makassar | Kendari | Manado